

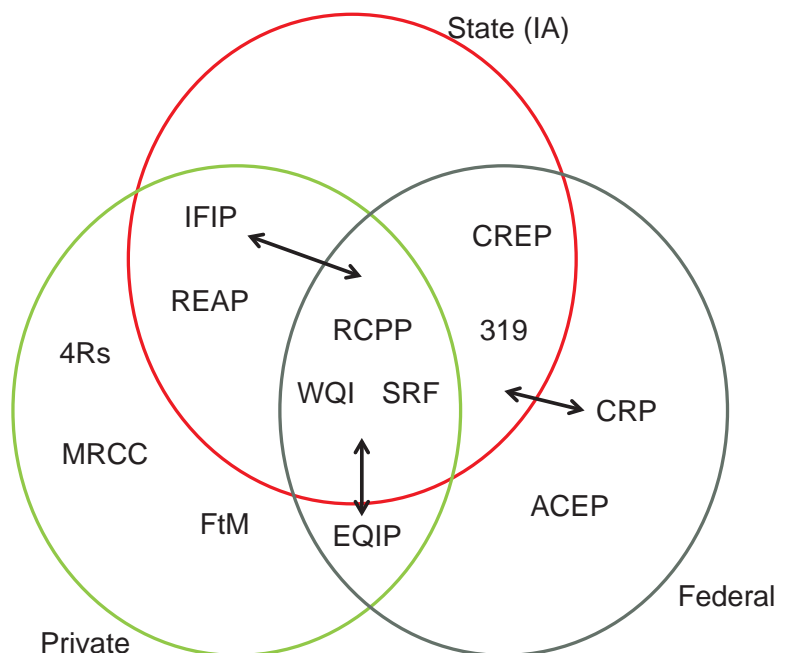
Background on NPS Measures Workgroup

- NPS Measures workgroup tasked with identifying a common measure
 - Impact
 - All States could reasonably report on.
- Not the only measure.
- Use to report and track progress, but also to help inform and improve implementation.



Background on NPS Measures Workgroup

1. Practice Summary:
 1. State and/or Local-level
 2. Federal-level
 3. Private/NGO-level
- Categories/parameters identified
 - Consistency of NPS Framework among states
- Identified challenges and barriers
 - Walton Family Foundation Grant
- Completed Final Draft of NPS Measures Progress Report



Public datasets

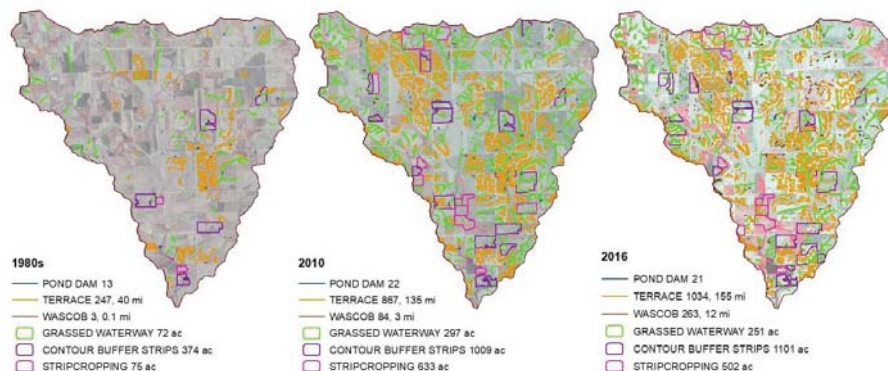
- Key parameters identified
- Categorize based on likelihood of availability, make assumptions and consistency between sources
- Develop a draft NPS Framework for reporting from all sources.

Key Base Parameters of Practice Data as Determined by NPS Measures Workgroup

| LIKELY AVAILABLE | LIKELY AVAILABLE DEPENDING ON SOURCE | LIKELY ABLE TO ASSUME VALUE BASED ON COLLECTED INFORMATION | NOT LIKELY AVAILABLE WITHOUT BROADER ASSUMPTIONS |
|--|--------------------------------------|--|--|
| State | HUC_12 watershed | Sunset Date | Pre-Implementation Tillage |
| County | Practice Code | Total Project Costs | |
| HUC_8 Watershed | | Water Quality Benefits | |
| Practice Name | | Practice Category | |
| Funding Source (State, Fed, Local, etc.) | | Pre-Implementation Land Use | |
| Program | | Area Treated (ac) | |
| Applied Amount | | Ancillary Benefits | |
| Practice Units | | Phosphorus Reduction (fraction) | |
| Applied Date | | Nitrogen Reduction (fraction) | |
| Cost Share Funding Expended | | | |

Private data

- Framework reportable for: NGOs, Agribusiness, Individual Landowners/Farmers
- Partnerships
 - Aggregate data, low resolution, statistically based
 - Appropriate for broad scale/variable practices
- Surveys (land use, tillage, 4Rs), Mapping (structural, “visible”), other data collection methods



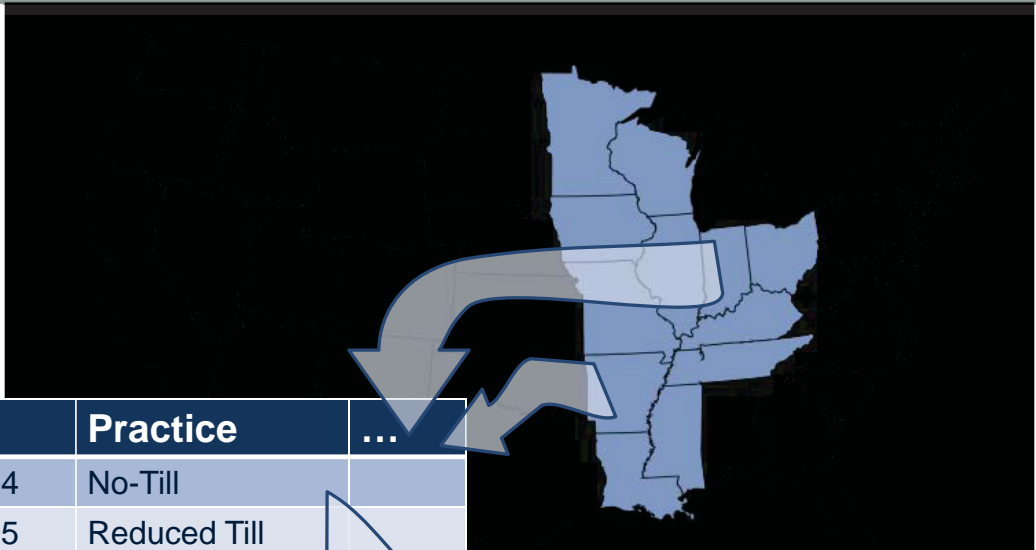
NPS Measures Progress Report

- **Barriers:**

- Potential for duplication and over reporting (without certain information)
 - Ex. Combined state/fed sources for 1 practice (CREP), practices established on non-cropland, etc.
- Consistent reporting of practices (similar units)
- Account for longevity of practice(s)
- Variability amongst practices and reported information – variability in practice names, acres treated, etc.
- Location of practice installation and downstream effects
- Private Implementation-needs more work, examples from other states

- **Walton Family Foundation project:**

- Resources to help coordinate continued development of the NPS Measures Framework
- 2 pilot states underway



| State | HUC 8 | Practice | ... |
|----------|----------|--------------|-----|
| Arkansas | 08020304 | No-Till | |
| Arkansas | 08020205 | Reduced Till | |
| Arkansas | 08020301 | Cover Crop | |
| ⋮ | ⋮ | ⋮ | |
| Indiana | 05120111 | Cover Crop | |
| Indiana | 05120201 | Filter Strip | |
| Indiana | 05120202 | Wetland | |

**% N and P
Non-Point Source
Load Reduction**